



ALPHA GAMMA SIGMA

2nd General

Meeting




March 19, 2024

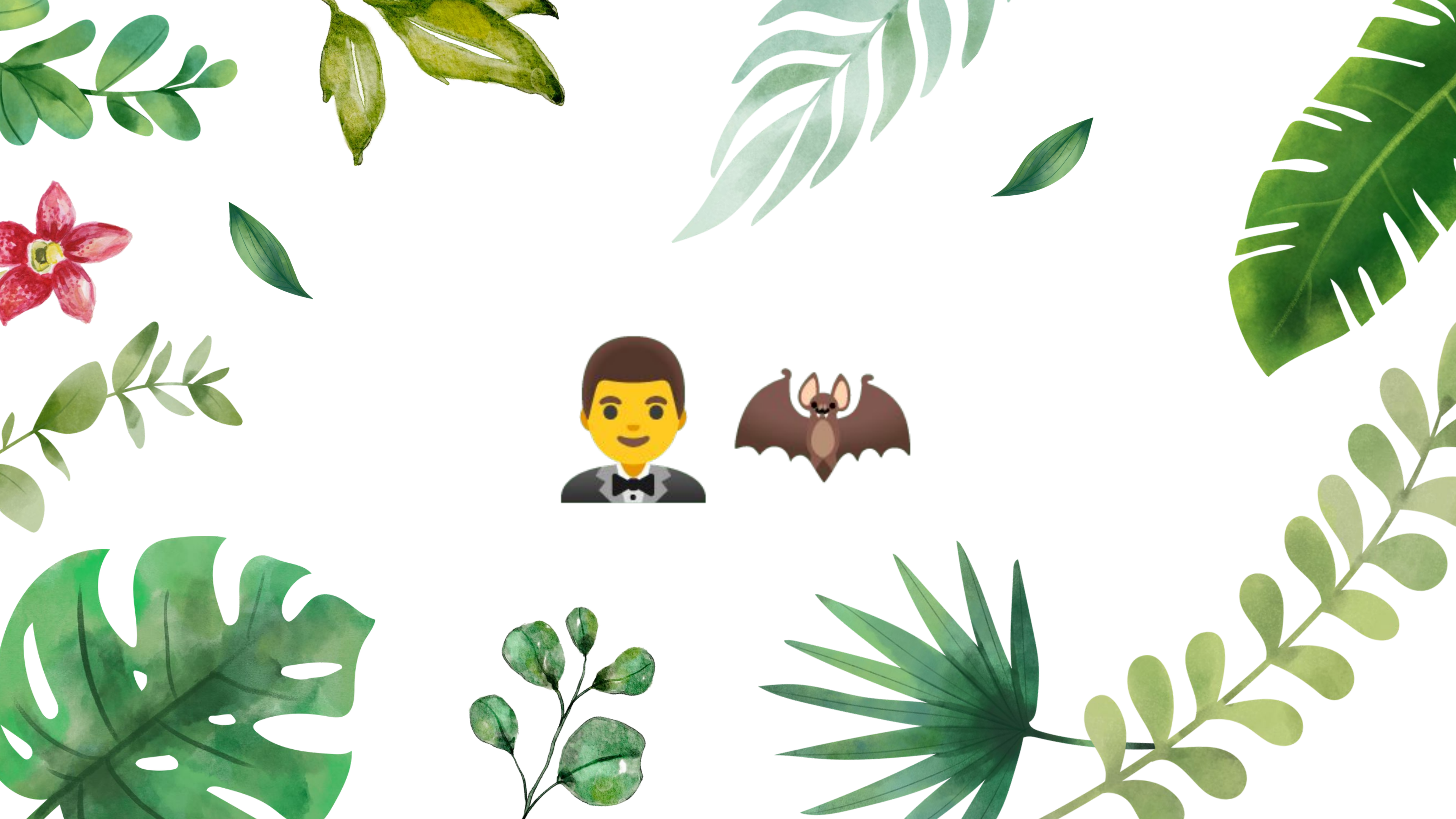


Icebreaker



GUESS THE MOVIE!

1. The room will be divided into 2 teams, the left side and the right side
 2. A series of emojis will be shown on the screen to represent a movie
 3. Anyone from either side can raise their hand to answer (try not to shout it out)
 4. The first team to guess the correct movie gets the point
 5. The team with the most points wins!
- 
- 
- 



The background features a watercolor-style illustration of various green leaves and a single red flower. The leaves include a large monstera leaf with characteristic holes, a palm frond, a fern-like leaf, and several smaller, rounded leaves. The red flower is positioned on the left side. The text 'The Batman' is centered in a bold, dark green font.

The Batman



The background features a watercolor illustration of various green leaves and a red flower. The leaves include a large monstera leaf with characteristic holes, a palm frond, a branch with small round leaves, and several other types of foliage in various shades of green. A single red flower with yellow center is positioned on the left side. The text "The Notebook" is centered in a bold, dark green font.

The Notebook





Up



The background features a collection of watercolor-style botanical illustrations. In the top left, there are small, rounded green leaves on a stem. To their right are larger, elongated green leaves. In the top right, a large, dark green monstera leaf with characteristic holes is visible. On the left side, a vibrant red flower with five petals and a yellow center is shown. Below it, another stem with small green leaves is present. At the bottom left, a large, dark green monstera leaf is partially visible. In the bottom center, there is a small branch with several rounded green leaves. At the bottom right, there is a fan-shaped palm leaf and another stem with small green leaves.

Harry Potter





Thor





Singin' in the Rain



A watercolor illustration of various green leaves and a red flower. The leaves include a large monstera leaf with characteristic holes, a palm frond, a fern-like leaf, and several smaller, simpler leaves. A single red flower with yellow center is also present. The background is white.

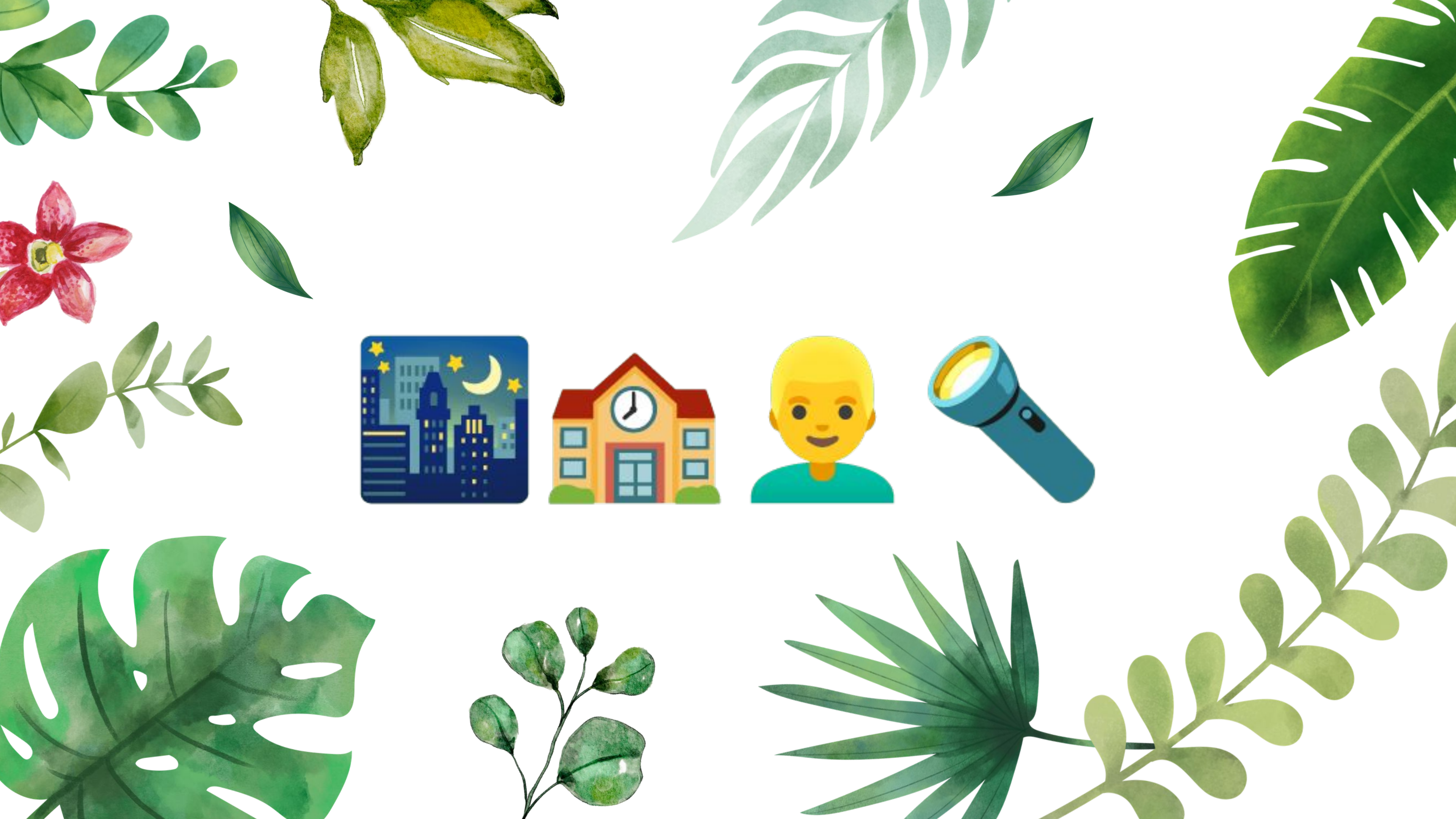
Chicken Run





The Wolf of Wall

Street



The background is a watercolor-style botanical illustration. It features various green leaves and plants scattered around the text. On the left, there is a red flower with yellow center and green leaves. At the top, there are several types of green leaves, including a large, light green leaf with a central vein and smaller, darker green leaves. On the right, there is a large, dark green leaf with characteristic holes (Monstera). At the bottom, there are more green leaves, including a large, dark green leaf with holes (Monstera) on the left, a fan-shaped palm leaf in the center, and a branch with small, rounded leaves on the right.

Night at the Museum



**Congrats to the
winning team!**

General Application: How to Apply

1. Go to our website

→ <https://eccags.wordpress.com/>

2. Fill out the general membership application.

3. E-mail us a pdf file containing: (1) application and (2) transcript

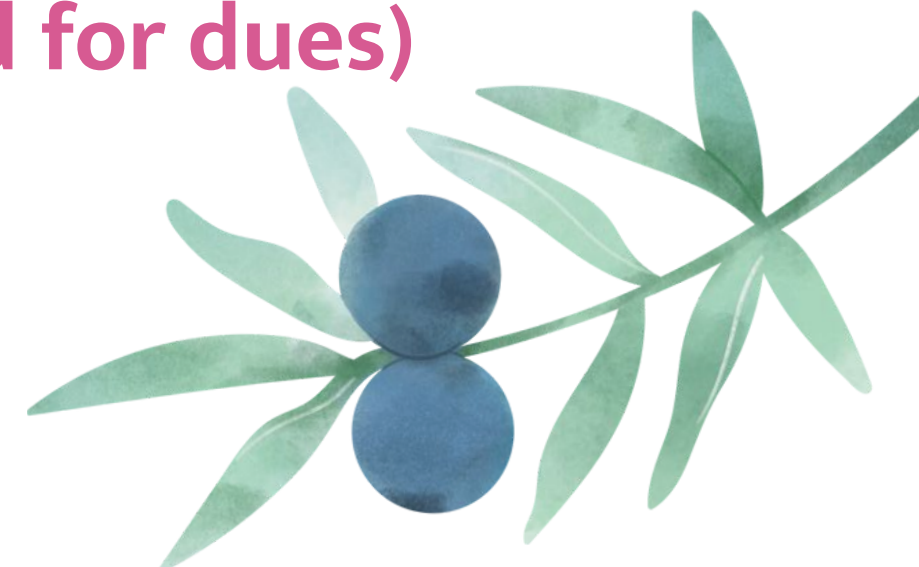
→ For those that qualify for silver membership, (3) proof of academic units/work hours ex: current school or work schedule

→ if applicable, provide proof of Financial Aid (info needed for dues)

→ ags.cabinet.ecc@gmail.com

4. Await confirmation email that application is accepted!

DUE APRIL 5TH AT 11:59PM



General Application: Requirements

◆ GPA Requirement:

- For those with less than 12 units in college
 - 3.50 GPA using high school transcript or proof of life membership in CSF
- For those with 12 units or more in college
 - 3.00 GPA or higher

◆ Dues:

- \$20 for Blue members (\$10 with proof of financial aid)
- \$40 for Silver members (\$20 with proof of financial aid)

General Application: Memberships

◆ Blue Membership

- Required to earn 10 service points
 - At least 3 from meetings, campus events, and community service & at least 1 additional in the listed categories

◆ Silver membership

- For those with a full time job of 30+ hours and/or students taking 16+ units
- Required to earn 5 service points
 - At least 1 point from meetings, campus events, and community service & at least 2 additional in the listed categories



Panda Express Fundraiser

- AGS x Panda Express Fundraiser **today**, March 19th, 2024!!!
- 28% of sales are donated back to us!
- Online fundraiser, available for delivery or pickup at any location
- When checking out, use the code **919797** in the Fundraiser Code box



FUNDRAISER FOR
Alpha Gamma Sigma

VIRTUAL COMMUNITY
FUNDRAISERS



- > When**
Tuesday, March 19, 2024
Place your order for pickup or delivery on Tuesday, March 19!
- > Where**
Available at Panda Express locations nationwide
www.pandaexpress.com
- > How**
Online orders only
Apply code **919797** in the Fundraiser Code box during online checkout at www.pandaexpress.com or via App

28% of sales will be donated to: Alpha Gamma Sigma

A state-wide organization that recognizes and encourages scholarship on 66 CC campuses in CA.



Vote



We are proposing to implement a Two-Round Election Process for electing future board members. This process will include:

- 1) Prospective board members will interview with the current board**
- 2) A vote will take place during a general meeting where members will vote for running candidates**

Current general members must vote to approve this proposal.

Motion to approve the Two-Round Election Process:

Second:

All those in favor



Timeline

3/19

**Panda Express
Fundraiser**

4/2

**3rd General
Meeting**

4/2-4/3

Blood Drive
More info TBA

4/5

**General
Application Due**

4/19-4/21

**Spring
Conference**



Our website,
Instagram,
and Discord



The image features a central text element surrounded by various watercolor-style botanical illustrations. The text "Questions?" is written in a green, serif font. The illustrations include several types of leaves: a branch with small, rounded leaves in the top left; a branch with elongated, pointed leaves in the top center; a large, deeply lobed leaf with holes (Monstera) in the top right; a branch with small, rounded leaves in the middle left; a branch with small, rounded leaves in the middle right; a large, deeply lobed leaf with holes (Monstera) in the bottom left; a branch with small, rounded leaves in the bottom center; a branch with long, narrow, pointed leaves in the bottom right; and a branch with small, rounded leaves in the bottom right. A single red flower with yellow center is located in the middle left.

Questions?

A watercolor illustration featuring various green leaves and a red flower. The leaves include a large monstera leaf with characteristic holes, a palm frond, a fern-like leaf, and several smaller, rounded leaves. A single red flower with yellow center is positioned on the left side. The text "THANK YOU" is centered in a green, serif font.

THANK YOU