



# AGS

First Meeting - Spring

3/9/2021

# TABLE OF CONTENTS

**1.** ABOUT Alpha Gamma Sigma  
What the organization is all about and what we are.

**2.** CABINET INTRODUCTIONS  
Who we are and what our roles are as part of AGS.

**3.** MAJOR REQUIREMENTS  
Overview of requirements to join, how to find the application and where to apply.

**4.** DURING THE SEMESTER  
What happens right after applying and how to remain an active member.

**5.** SNEAK PEEK  
Important dates to know and an overview of last semester.

**6.** END OF INTRO GAME!  
How to earn credit for today's meeting!

## OUR CHAPTER

*“Add Good Character,  
Knowledge, and Judgement.”*

AGS as a whole, is a statewide honors organization based throughout California’s community colleges. The purpose of AGS and our chapter (*ALPHA PHI*) is to “Foster, promote, maintain and recognize scholarship.”

Visit the official AGS (state) website [here](#) (though it’s not as good as ours)



**ALPHA GAMMA SIGMA  
ALPHA PHI CHAPTER**

# BENEFITS OF JOINING AGS



## NETWORKING/RESUME BUILDING

Especially with online classes, this is a great way to meet other dedicated students and gain valuable experience to help you later in life.



## GOLD SEAL

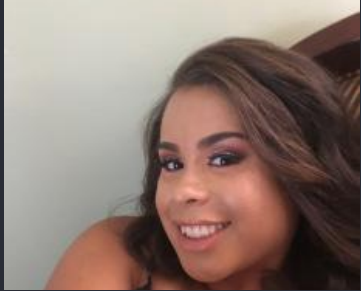
Completing the requirements for Permanent membership will give you the official Gold Seal of AGS on your official El Camino transcripts.



## GRADUATION

In an in-person semester, you would get a gold sash to wear at graduation and get to sit in the Honor's section!

# CABINET 2021



**SOPHIA TABARES**

Co-President, sender of emails, maker of powerpoints, Biology/Neuroscience major trying to go to USC

**CAMELLIA ABOLGHASSEM**

Vice President/ICC Rep Business/Real Estate major. Hope to transfer to USC!



**ZOE ROUZAUD**

Co-President, secretary, engineering major, with dreams of going to school in person.

**CAMILLE ERIKA MIRANDA**

Co-Activities Chair Kinesiology Major, aiming to become an Occupational Therapist

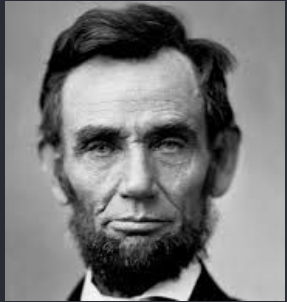


# CABINET 2021



SOPHIA SORIANO

Treasurer  
Undecided (probably will declare a major in STEM!)  
No dream schools at the moment, still figuring it out:)



JASON MARCOS

Assistant ICC Rep.  
Business Administration  
Major. Hopes to transfer to UCLA!

CAITLIN HOOPER

Co-Activities Chair,  
Biology/Pre-Med  
Major. I hope to transfer to UCLA!



PROF. JOSH CASPER

AGS advisor,  
Dept. of Political Science  
Supreme Benevolent  
Overlord



# REQUIREMENTS FOR ENTRY MEMBERSHIPS

3.0 or greater GPA in a minimum of 12 units over the last two years in college  
OR

3.5 or greater GPA (for those right out of highschool)

(If you know have a GPA that is close to, but still does not meet our requirements, we are still encouraging you to apply, though acceptance is not guaranteed)



## The application

Find our spring application [here](#)  
Please complete the app and send it to [ags.cabinet.ecc@gmail.com](mailto:ags.cabinet.ecc@gmail.com) as a PDF with your unofficial transcripts and proof of financial aid (if needed)



## Paying dues

Dues must be paid before April 9th and after you've been formally accepted.

\$20 for BLUE membership

(\$10 for blue membership with proof of financial aid)

\$40 for SILVER membership

(\$30 for silver membership with proof of financial aid)

\*Students who have a Life Membership in the California Scholarship Federation are invited to join\*\*

# COMPARISON OF MEMBERSHIPS

	BLUE	SILVER
CAMPUS/AGS	2	1
COMMUNITY	2	1
MEETINGS	2	1
PAYMENT	\$20/ \$10 FA	\$40/\$30 FA

Blue is the most common type of membership

Silver members must show proof of either 1. Taking more than 16 units 2. Working 40+ hours a week or 3. Have a dependent

Each point is roughly defined as ONE HOUR of a “service” that is performed.

Campus/AGS events include any events, workshops, or presentations that are being offered by El Camino or any other club on campus. HTP workshops will not be accepted for credit.

Meeting attendance is earned by joining and participating in AGS zoom meetings.



# COMMUNITY EVENTS/OPPORTUNITIES

- [Dosomething.org](https://dosomething.org) - most “user friendly,” low-commitment, fairly easy work
- [bemyeyes.com](https://bemyeyes.com) -requires app download, work based off of demand, very easy work
- [unv.org](https://unv.org) - long term projects, best for college applications, difficult tasks
- <https://www.chemoangels.com/angel-pre-app> -- extremely heavy work, only suited for those with enough time to dedicate, must be 18+, long-term commitment, very good for college applications
- <https://translatorswithoutborders.org/volunteer/> -- must be bilingual (duh!)
- <https://www.cancer.org/involved/volunteer/online-and-social.html> - very easy work, must be social media literate, hard to accumulate multiple “hours”
- <https://www.pgdp.net/c/accounts/addproofer.php> - must have PROFICIENT reading/writing skills, proofreading works of literature
- <https://careers.amnesty.org/vacancy/find/results/> - similar to UNV, work is long-term based and opportunities may be hard to find, best for college applications

# COMMUNITY EVENTS/OPPORTUNITIES

<https://www.redcross.org/volunteer/become-a-volunteer.html> - type of work varies widely, most offers are in-person, very easy to find hours

- <https://www.zooniverse.org/get-involved> - assisting in professional research, very user friendly, easy to find a topic of interest for each user
- <https://www.crisistextline.org/become-a-volunteer/> -- very emotionally heavy work, 30 hours of mandatory, unpaid training, work is primarily from 7pm-3am
- Given that the current restrictions have greatly impacted the number of volunteer opportunities available, if you find something that you think would work, just ask if you can use it for points!
- We are trying to do our part to slow the spread by not encouraging you to go outside unnecessarily, stay home and stay safe if you can.
- FOR THE SPRING 2021 SEMESTER - we are trying to do our best to encourage people to get vaccinated.
  - If you receive the COVID-19 vaccine (any type) you will receive 1 point of community service. If you were vaccinated before the semester started, you will still earn 1 point.

# TIMELINE



**APRIL 6th**

2nd meeting of the semester and when apps are due!

**MAY 4th**

Third meeting of semester - checking on permanent apps

**JUNE 1ST**

Last meeting of semester and day service point sheets are due!

**APRIL 9th**

Day that dues must be paid by.

**MAY 7th**

Permanent apps are due!!!!!!

# WHAT TO DO AFTER APPLYING

After applying, you should expect to receive a follow-up email within a few days. Give it anywhere from 24 hrs to one week.

Once you have gotten the confirmation of acceptance, make sure you get dues in ASAP to avoid issues (or at least by APRIL 9.)

After dues have been paid, you are officially a member! Start earning your points and asking questions if you have any!

# Recap of last semester and additional info



## FALL 1

First meeting from fall, basically same as this one



## FALL 2

2nd meeting from fall, updates and ideas for points, permanent member info



## FALL 3

Examples of community service, how to submit proof for points



## FALL 4

Final meeting ppt, this one is just pretty idk



## POINT SHEET

Link to the point sheet, print it out to keep track of everything!



## Social Media

Don't forget to follow our socials to stay up-to-date!

# THANKS!

DO YOU HAVE ANY QUESTION?

ags.cabinet.ecc@gmail.com

<https://eccags.wordpress.com/>



Now time for the end of meeting game!